



TECHNICAL DATA	Venezia 700	
Date:2020-01-27	COD:202070000	
	To Company: BJC Tools Erp BV Reference: BJC Tools Phone: Email: .	
	Reference: BJC Tools Offer no.: 2020010113	

OPERATING DATA REQUIRED

Flow	0 l/min	Viscosity	1,005 mm ² /s
Head	0 m	Kin. viscosity	1,0033 mPa s
Fluid	Cold water	Vapor pressure	0,02337 bar
Temperature	20 °C		
Density	0,9983 kg/dm ³		

SUBMERSIBLE DRAINING ELECTRIC PUMPS



The submersible draining pumps with open impeller of the series VENEZIA® have been developed with the most advanced and sophisticated engineering and industrial design systems. The particular form, the integrated automatic switch, the possibility to operate also if partially submerged, the total absence of screws and the particular compound polymers used, make Venezia® one of the most innovative and technological advanced pumps available on the market.

The VENEZIA® have been design to pump clear water, waste water or slightly dirty water, but not aggressive for the pump's materials.

Liquid temperature not higher than 35 °C. (CEI EN 60335-2-41).

The VENEZIA® may work also partially immersed.

The VENEZIA® version 300 & 500 may suck water up to 2 mm.

		SEA LAND S.r.l. (PD) ITALY www.sea-land.it				MADE IN ITALY	
Type							
H (rif.5)		m		Q (rif.5)		l/1'	
Hmin m		Hmax (rif.6) m		P ₁ (rif.4)		W	
○ (rif.2) HP		(rif.2) HP		(rif.1)		○ A	
~ (rif.1) V				Hz		η %	
(rif.3) μF V		IP (rif.9)		Rpm			
S/N				Ins.Cl (rif.8)		▽ m	
T. MAX FLUID.		°C		(rif.7) kg			
Servizio continuo				Continuos duty			

GENERAL DESCRIPTION

Voltage = V...(ref. 1), Power = HP or KW... (ref. 2), Input power = [W]...(ref. 4), Capacitor = μF...(ref. 3), Input current = A... (ref. 1), Rate of flow = l/1'...(ref. 5), Head = m...(ref. 5), Weight and dimensions = kg... (ref.7), Insulation Class = ...(ref. 8), Protected to = IP...(ref. 9)

From

Company: BJC Tools Erp BV
Reference: Niels van Gerwe

Phone: 0413- 21 1156
Email: niels@bjctools.nl

Sea-land reserves the right to make changes without prior notice
Pagina 1 / 3



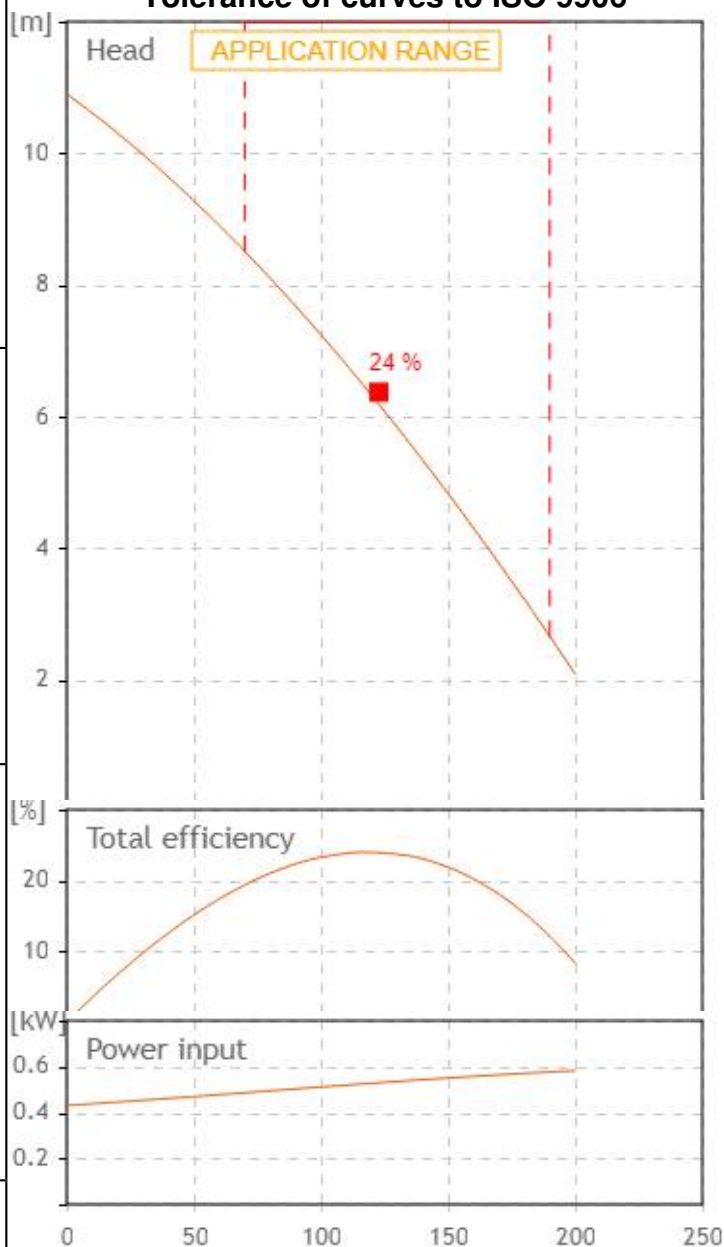
TECHNICAL FEATURES


- Pump body, outer motor casing and base filter: Syntegum 1720
- Impeller : in Dynaril
- Bearings bracket: in die casting aluminium UNI 5076
- Motor body in stainless steel: AISI 304
- Pump shaft: stainless steel: AISI 420 F
- Pump's side mechanical seal: carbon-ceramics
- Motor's side seal: lip ring in NBR
- 10 m H05RN-F feeding cable
- Max. immersion 5 m

MOTOR

- Two poles induction rewindable motor, cooled by the pumped liquid, with protection IP 68, class F insulation.
- Single-phase feeding with incorporated motor protector and capacitor permanently connected.
- Continuous duty.

Tolerance of curves to ISO 9906



		SEA LAND S.r.l.		CE	
		(PD) ITALY		MADE IN ITALY	
		www.sea-land.it			
Type Venezia 700					
H	2.5 - 8.5	m	Q	190 - 70	l/1'
Hmin 2.1	m	Hmax 10.9	m	p ₁ 580	W
○ 0,7 HP		0,51 kW		2.5	○ A
~ 230	V	50	Hz	η	%
12.5 μF	450 V	IP 44	2900 Rpm		
S/N			Ins.Cl F	▽	m
T. MAX FLUID.		35 °C	8.5	kg	
Servizio continuo			Continuos duty		

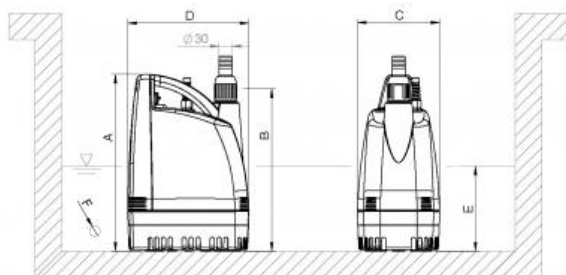
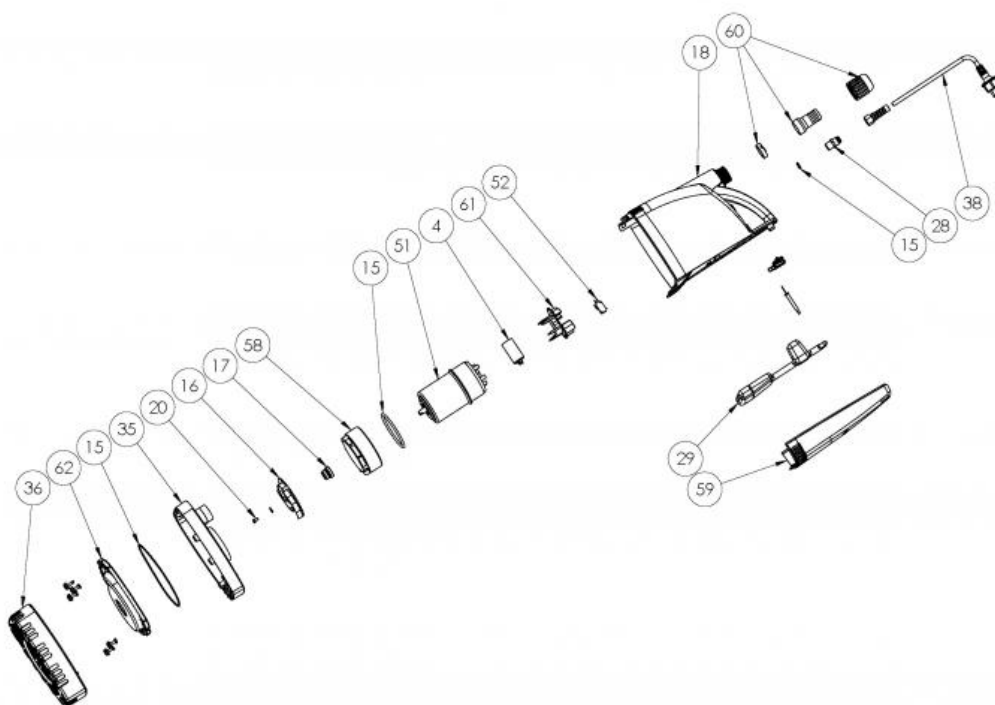


From

Company: BJC Tools Erp BV
Reference: Niels van Gerwe

Phone: 0413- 21 1156
Email: niels@bjctools.nl

Sea-land reserves the right to make changes without prior notice
Pagina 2 / 3



TIPO	DIMENSIONI [mm]							IMBALLO [mm]			PESO
TYPE	DIMENSIONS [mm]							PACKING [mm]			WEIGHT
	A	B	C	D	E	F	DNM	Ai	Li	Pi	[kg]
Venezia 700	400	365	175	270	120	Ø2	1" 1/4	430	280	230	8.5

From

Company: BJC Tools Erp BV
Reference: Niels van Gerwe

Phone: 0413- 21 1156
Email: niels@bjctools.nl

Sea-land reserves the right to make
changes without prior notice
Pagina 3 / 3