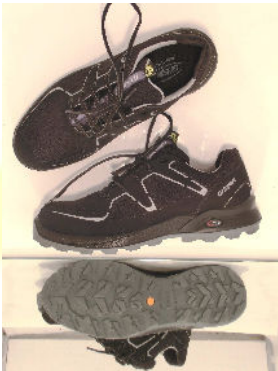


## CE TYPE APPROVAL CERTIFICATE

n. **158171205/OE**

2017/03/22

This is to certify, that the hereunder described items of Personal Protective Equipment have overcome positively the "CE type examination", proving their conformity to the safety and health requirements of the Directive 89/686/EEC.

Manufacturer: (Responsible of the PPE)	<b>GRISPORT SpA calzaturificio</b> 31030 CASTELCUCCO (TV) – Via Erega, 1 - ITALIA	
Type of PPE:	<b>Safety footwear</b> in conformity with <b>EN ISO 20345:2011 class I</b> (= footwear in leather and other materials, excluding all-rubber or all-polymeric footwear)	
Category of PPE:	<b>II: Personal Protective Equipment against "medium" risks.</b> This certificate is based on reference standards listed below: its validity is no longer ensured should new version of the standards come into force.	
Model	<b>"701609CP41"</b>	
Description:	 <p><u>design</u>: A (low shoe); <u>fastening system</u>: by means of laces; <u>processing</u>: direct injection; <u>outsole</u>: GREY rubber with an orange rounded stamp marked "TOTAL GRIP HI SRC HRO CROSS OIL RESISTANT" (030EBN/00 – 003/ 32E/00); <u>midsole</u>: black PU foam (MPI/001); <u>upper</u>: black fabric art. POLY600 7mm matched with GARBOFORT (P6G/NER), with lateral inserts in coated non-woven mat. with declared thic kn. 1,4mm art. LAV.EST. col. TRUE BLACK (PRE/TRBL) and, in the heel zone, a coated non-woven mat. with declared thic kn.1,4mm SINTETICO col. TRUE BLACK (PRB/TRBL); <u>tongue</u>: black fabric art. POLY600 7mm simple (P60/NER); <u>bellows</u>: black coated and lined fabric art. ANDREA SILVIA (ANS/NER); <u>vamp lining</u>: non-woven black material art. AITELLE 150 matched with MTP4 D40 and CHARMEUSE in black col. (FCA/NEC); <u>rear lining</u>: 3-dimensional ice-colored fabric art. AT488 SPECIAL (A8S/91); <u>heel-grip</u>: black microfiber MICRILIM 0,8 SCAMOSCINA (MI8/NER); <u>insole</u>: white multi-layered fabric ZP02/1500 (LC/ZP02) <u>which also serves as perforation resistant insert</u>; <u>removable insock</u>: grey perforated foam material matched with black textile in contact with the foot, with an aluminium oval stitched on the lower part of the forepart with an antistatic thread, with a red ABS insert in the heel area (FTNAROA); <u>toecap</u>: fiber-glass material article 604 CONTENDER (604 FV).</p>	
Technical Standard:	<b>EN ISO 20344:2011</b> (UNI EN ISO 20344:2012) <b>EN ISO 20345:2011</b> (UNI EN ISO 20345:2012)	Personal protective equipment – Test methods for footwear Personal protective equipment – Safety footwear
Intended use:	general industry, engineering industry, agriculture, warehouses, works on trucks, cranes.	
Size range:	From 36 to 48.	
Technical File:	<b>DC-8324/E</b> (including Application to <b>RCT</b> and Technical Documents).	
Test report:	<b>RCT n°361118.</b>	
Basis of evaluation:	applicable requirements of European Directive 89/686/EEC and reference Standards.	

## CE TYPE APPROVAL CERTIFICATE

n. **158171205/OE**

2017/03/22

Functions and performance levels:

**basic requirements for safety footwear** (see Table 2 and 3 of EN ISO 20345:2011): all mandatory ones, among which:

**SRC= Slip resistance** - meets the following requirement:

- surface: ceramic / lubricant: detergent solution;
- surface: steel / lubricant: glycerol.

**Additional requirements** (Tab. 18 and 20 of EN ISO 20345:2011):

**S3=** closed seat region, antistatic properties, energy absorption of seat region, resistance to fuel oil, water penetration resistance and absorption (water-repellent upper), penetration resistance, cleated outsole; **HRO=** resistance to hot contact of the outsole; **HI =** heat insulation of sole complex.

Notes: [1] the penetration resistance of the synthetic stitch proof insole tends to decrease with the diameter of the perforating object; in return the synthetic insole offers more protective surface and ergonomics advantages (flexibility, insulation, humidity and impact absorption) [2] The footwear also meets the requirement in accordance with IEC 61340-4-3:2001 for the electrical resistance **ESD class 1** (electric dissipative footwear).

Marking:

on a stitched label and containing the following information:

- **CE Marking** attesting PPE conformity to all the provisions of Directive 89/686/EEC (and any subsequent amendments);
- Name of the Manufacturer;
- designation, unique and unambiguous, of the footwear (alphanumeric code);
- nr. and year of the Technical Harmonized Standard of reference;
- safety symbols;
- size of footwear;
- production date (month + year);
- additional information: internal codes.

**CE** UNI EN ISO  
20345:2012  
02 / 2017

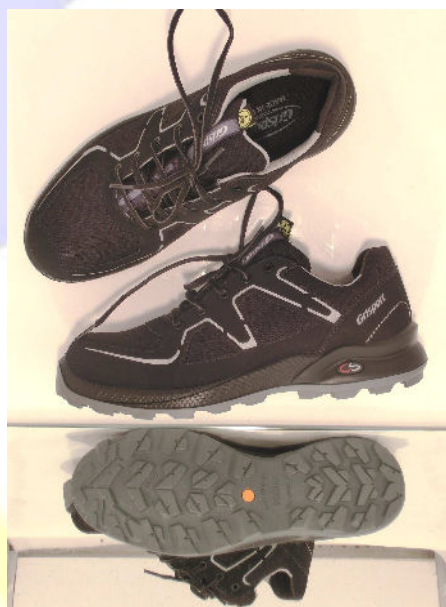
701609CP41 S3 HRO

HI SRC-ESD CLASS 1

XXXXXX

701609c41

42



Note: the Technical File contains a more detailed description of the PPE (material, method of assembly, photographs or drawings), performance data, safety functions and level of protection, elements of conformity to the basic and supplementary requirements. The Technical File is integral part of the present Certification, which has to be kept available by the applicant to be forwarded - upon request - to the entitled person (supervising body, Controlling Officer).

  
Marco Meyer  
Managing Director